

FIGURE 8. Curb cut spacing requirements.

## CURB CUT SPACING

### Local and Collector Streets/Commercial and Industrial:

The minimum spacing shall be to provide 20 feet of vertical curb between curb cuts on the same or abutting parcels.

### Local and Collector Streets/Residential:

1. The minimum spacing shall be to provide 20 feet of vertical curb between curb cuts on the same lot.
2. Driveways on abutting lots shall be combined or shall maintain a minimum spacing of 6 feet. Where a shared curb is not possible, curb cuts shall be a minimum of 3 feet from the property line.

### Major and Minor Arterials:

1. Backup design with dedication of access shall be the recommended treatment for industrial and residential land uses.
2. The minimum spacing shall be to provide a minimum of 600 feet between curb cuts with left turn access.
3. Where ingress and egress is a right turn in and right turn out only, minimum spacing shall be to provide 150 feet of vertical curb between curb cuts.

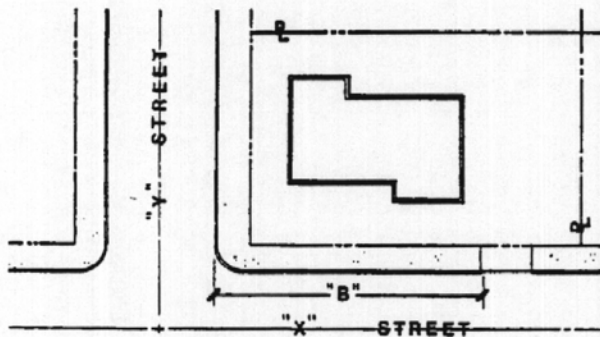
### General Requirements for All Streets

1. Curb cuts shall be a minimum of 5 feet from a fire hydrant, utility pole, tree, etc. or any similar structure.

Note: For definition purposes only the term "curb cut" shall include driveways; streets; and/or alleys. The "curb cut" dimension shall include the measurement from the top of the apron.

Note: Curb cut spacing for service stations shall be determined by the Public Works Director on a case by case basis.

## MINIMUM INTERSECTION CURB CUT SPACING



"X" ST. "Y" ST.	MAJOR OR MINOR ARTERIAL	COLLECTOR OR EXISTING SIGNAL	LOCAL STREET
MAJOR OR MINOR ARTERIAL	B = 150	B = 70	B = 70
COLLECTOR OR EXISTING SIGNAL	B = 150	B = 70	B = 50
LOCAL STREET	B = 150	B = 70	B = 20