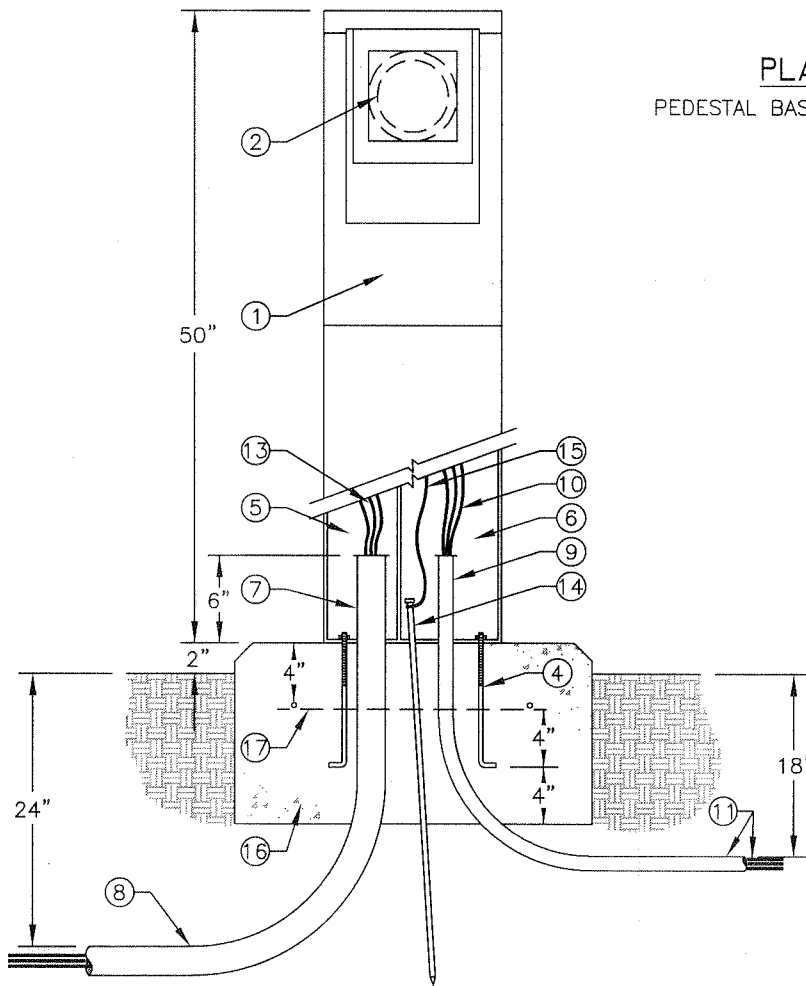


PLAN VIEW
PEDESTAL BASE & CONCRETE FTG.



FRONT ELEVATION/SECTION VIEW

NOTE:
SEE SHEET 2 FOR KEYNOTES
& GENERAL NOTES

REVISION	BY	DATE	APP. BY COUNCIL

CITY OF CHICO

STANDARD PLAN

DRAWN BY: GL DATE: 9/09
 CHECKED BY: DB SCALE: NONE
 APPROVED: *[Signature]*
 CPSD DIRECTOR

METERED ELECTRICAL
SERVICE ENCLOSURE

NO.
LS-27

SHEET 1 OF 2

KEYNOTES:

- ① TESCO MODEL 26-000 TYPE III AF METERED ELECTRICAL SERVICE ENCLOSURE, OR APPROVED EQUAL.
- ② METER (BY PG&E)
- ③ METER PEDESTAL BASE.
- ④ 5/8"φ x 8" GALV. J-BOLT ANCHORS W/ GALV. WASHERS, (TYP OF 4). REFER TO MANUFACTURER'S LAYOUT DIMENSIONS.
- ⑤ SERVICE SIDE OF PEDESTAL.
- ⑥ LOAD SIDE OF PEDESTAL.
- ⑦ 2"φ SCH. 40 PVC ELECTRICAL CONDUIT STUB-UP (BY PROJECT CONTRACTOR).
- ⑧ 2"φ SCH. 40 PVC ELECTRICAL CONDUIT W/ 5/16" PULL CORD TO PG&E SECONDARY SERVICE PULL BOX (P.O.C.). REFER TO PROJECT PLANS.
- ⑨ TWO 1"φ SCH. 40 PVC ELECTRICAL CONDUIT STUB-UPS. REFER TO PEDESTAL BASE PLAN VIEW.
- ⑩ TWO #10 W/ GROUND FROM POWER DISTRIBUTION PANEL IRRIGATION CIRCUIT BREAKER - TO IRRIGATION CONTROLLER.
- ⑪ 1"φ SCH. 40 PVC ELECTRICAL CONDUIT W/ TWO #10 W/ GROUND TO AUTO IRRIGATION CONTROLLER OR TO PULL BOX. REFER TO CITY OF CHICO STANDARD PLANS LS12 & LS13 RESPECTIVELY AND PROJECT PLANS.
- ⑫ 1"φ SCH. 40 PVC ELECTRICAL CONDUIT FOR DISTRIBUTION PANEL SPARE 120V CIRCUIT BREAKER (FUTURE). STUB 6" BEYOND PEDESTAL CONCRETE PAD/FOOTING.
- ⑬ SERVICE CONDUCTORS, TO METER (BY PG&E).
- ⑭ 5/8"φ COPPER CLAD GROUND ROD, LENGTH & INSTALLATION PER CODE.
- ⑮ #8 BARE COPPER GROUND. INSTALLATION PER CODE.
- ⑯ CONCRETE PAD/FOOTING, SLOPE EXPOSED CONCRETE 1/4" TO DRAIN W/ 1/2" CHAMFER ALL AROUND.
- ⑰ #4 REBAR
- ⑱ BARRIER

GENERAL NOTES:

- ① METERED SERVICE ENCLOSURE: 12 GA H.D. GALV. STEEL PAINTED STANDARD GREEN W/ 100 AMP METER SOCKET & SUPPORT HARDWARE, 100 AMP MAIN DISCONNECT, DISTRIBUTION PANEL OF ONE 20 AMP CIRCUIT BREAKER (IRRIGATION CONTROLLER), ONE 20 AMP CIRCUIT BREAKER (SPARE). CABINET TO BE PREWIRED AND ALL COMPONENTS TO HAVE FASTENED ENGRAVED NAMEPLATES.
- ② REFER TO PROJECT PLANS FOR LOCATION OF PG&E SECONDARY POWER P.O.C., LOCATION OF 120V ELECTRICAL PULL BOXES, CONDUIT SIZES AND AUTO IRRIGATION CONTROLLER LOCATION.
- ③ ALL ELECTRICAL WORK TO BE PERFORMED BY A LICENSED ELECTRICIAN IN FULL ACCORDANCE W/ NEC & LOCAL CODES.
- ④ ALL METER PEDESTAL PADLOCKS TO BE FURNISHED BY THE CITY OF CHICO.

REVISION	BY	DATE	APP. BY	COUNCIL

CITY OF CHICO

STANDARD PLAN

DRAWN BY: GL DATE: 9/09
 CHECKED BY: DB SCALE: NONE
 APPROVED: [Signature]
 CPSD DIRECTOR

**METERED ELECTRICAL
 SERVICE ENCLOSURE
 KEYNOTES & GENERAL NOTES**

NO.
LS-27
 SHEET 2 OF 2