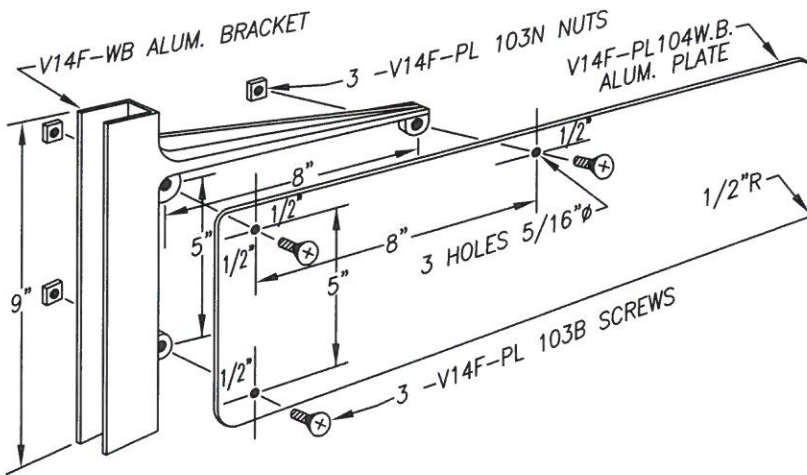


**POST ASSEMBLY  
DETAIL**



**WING BRACKET  
DETAIL**

**NOTES:**

1. LETTERING TO BE STD. HWY. SIGN ALPHABET, U.S. PUBLIC ROAD ADMIN. CUT FROM SCOTCHLITE ELECTROCUT TRANSLUCENT FILM (E.C.FILM), SERIES 1170, GREEN OR BLUE, WITH 1/2-INCH WHITE BORDER AND WHITE LETTERING.

2. STREET NAMES SHALL START WITH A 4-INCH HIGH CAPITAL LETTER AND SERIES B, C, D OR E FOLLOWED BY 2-INCH HIGH LOWERCASE LETTERS. 2-INCH HIGH SUPERSCRIPT LETTERS TO FOLLOW NUMBERED STREETS (1ST, 2ND, ETC.). EACH NAME SHALL BE INDIVIDUALLY LAID OUT AND SPACED TO FIT 24, 30 OR 36-INCH PLATES. USE LETTER SERIES NECESSARY TO FIT WITHIN 36-INCHES, USING THE LARGEST LETTERS POSSIBLE FOR BALANCED LAYOUT.

3. ALL CATALOGUE NUMBERS ARE HAWKINS & HAWKINS, 1255 EASTSHORE HIGHWAY, BERKELEY, CALIFORNIA 94710.

4. ALUMINUM PLATE SHALL BE .125" THICK 5052 H38 ALLOY WITH ENG. GRADE REFLECTIVE WHITE 2290 SCOTCHLITE ON BOTH SIDES, OR APPROVED EQUAL.

5. USE ALUMINUM CROSSPIECES LISTED BELOW, OR APPROVED EQUAL, WITH .125" SLOTS:  
 90°=V14F(HD)SL-105(90)  
 45° RIGHT=V14F(HD)SL-105(45R)  
 45° LEFT=V14F(HD)SL-105(45L)

6. ALUMINUM POST CAP TO FIT 2" PIPE SHALL BE V14F(HD)SL-107-2C WITH .125" SLOT, OR APPROVED EQUAL.

7. FOR ROADS WITH A SPEED LIMIT OF 45 MPH OR HIGHER, INCREASE HEIGHT OF SIGN TO 8" WITH 6" CAPITAL AND 3" LOWER CASE LETTERING ON A 2" SQUARE GALVANIZED POLE.

REVISION	BY	DATE	APP. BY COUNCIL

**CITY OF CHICO**

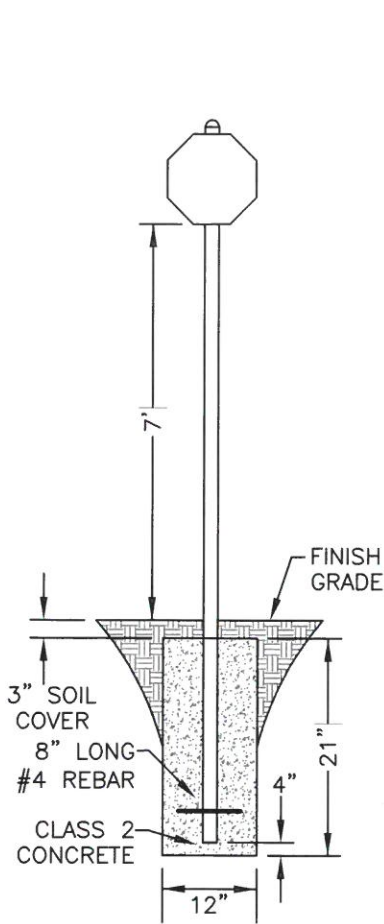
**STANDARD PLAN**

DRAWN BY: GL DATE: 02/2016  
 CHECKED BY: BO SCALE: NONE  
 APPROVED: Blue Otter  
 PUBLIC WORKS DIRECTOR-ENGINEERING

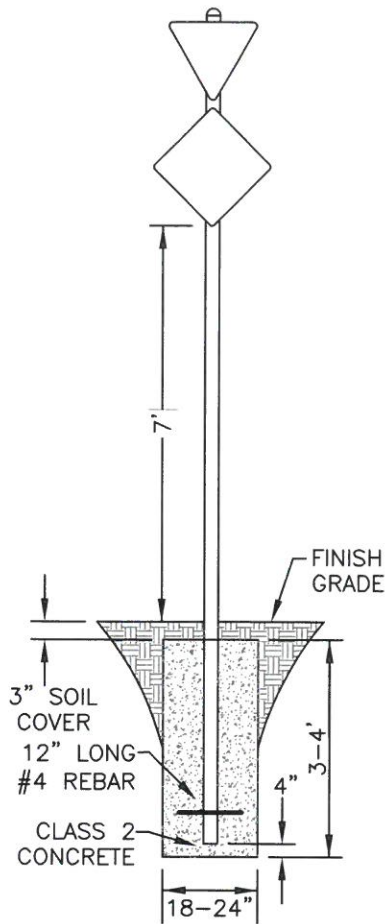
**STREET NAME SIGN DETAILS**

NO.  
**S-16**

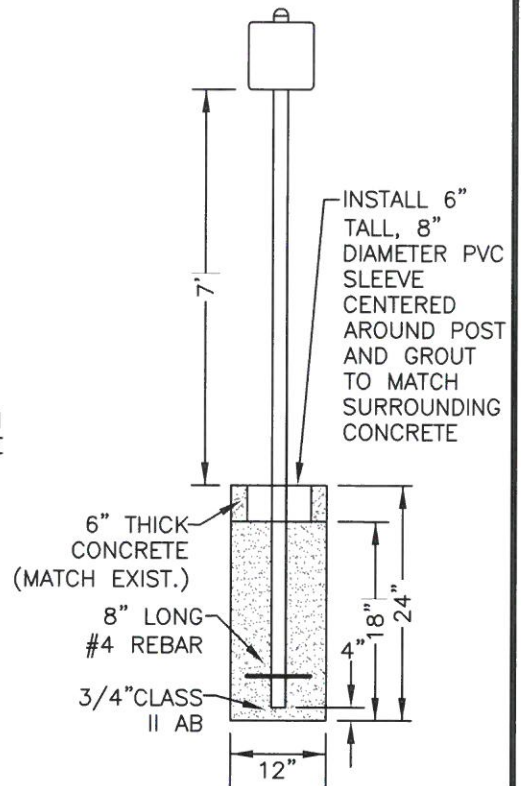
SHEET 1 OF 3



**SINGLE SIGN  
DETAIL**

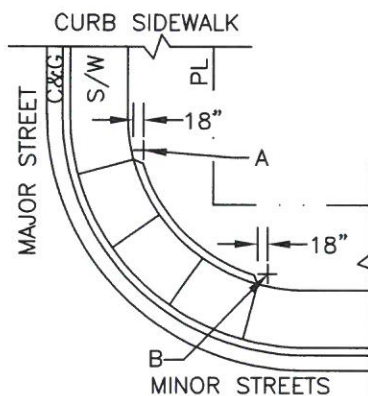
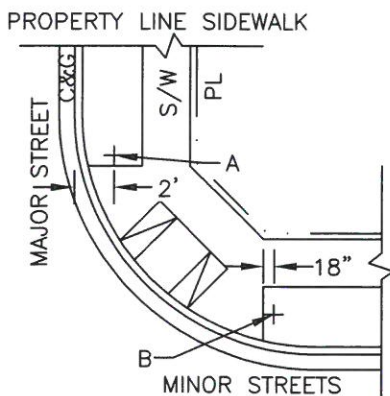


**MULTIPLE SIGN  
DETAIL**



**SIDEWALK OR  
MEDIAN  
DETAIL**

REVISION	BY	DATE	APP. BY	COUNCIL



**LOCATION DETAILS**

**NOTES:**

1. A=LOCATION WHERE CURB RADIUS IS 30' OF GREATER, OR WHERE SPEED LIMIT ON MAJOR STREET IS 35 MPH OR MORE.  
B=LOCATION WHERE CURB RADIUS IS 27' OR LESS AND WHERE SPEED LIMIT IS LESS THAN 35 MPH.
2. GENERALLY, SIGNS ARE TO BE INSTALLED ON THE NEAR LEFT AND FAR RIGHT INTERSECTION CORNERS ON MAJOR STREETS
3. THE ENGINEER IS TO DETERMINE THE SIZE OF THE POST HOLE FOR MULTIPLE SIGN POSTS BASED ON THE LOAD.
4. 18" MINIMUM CLEARANCE REQUIRED BETWEEN TRAVEL WAY AND EDGE OF SIGN PROJECTION.
5. ALL POLE INSTALLATIONS TO BE INSPECTED PRIOR TO BACKFILL.

**CITY OF CHICO**

**STANDARD PLAN**

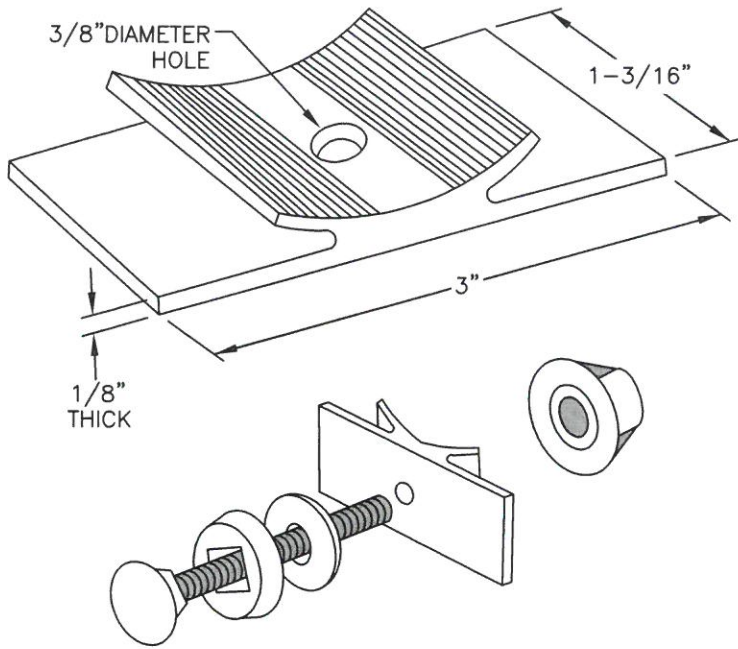
DRAWN BY: MJD      DATE: 02/2016  
 CHECKED BY: BO      SCALE: NONE  
 APPROVED: Burl Otter  
 PUBLIC WORKS DIRECTOR-ENGINEERING

**STREET POST INSTALLATION  
DETAILS**

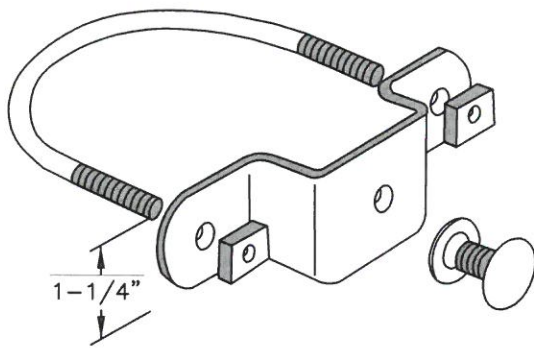
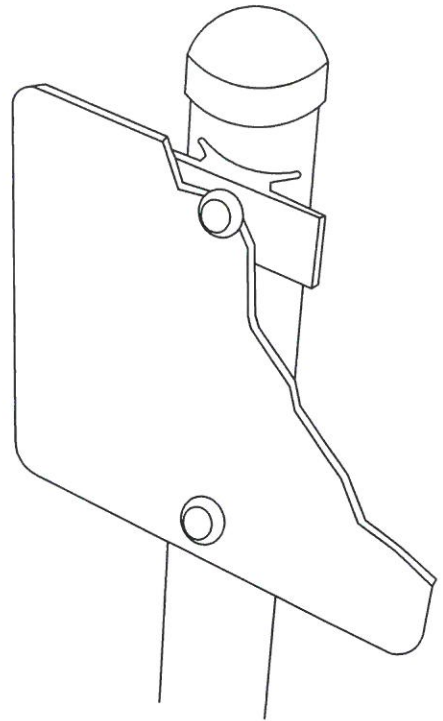
NO.  
**S-16**

SHEET 2 OF 3

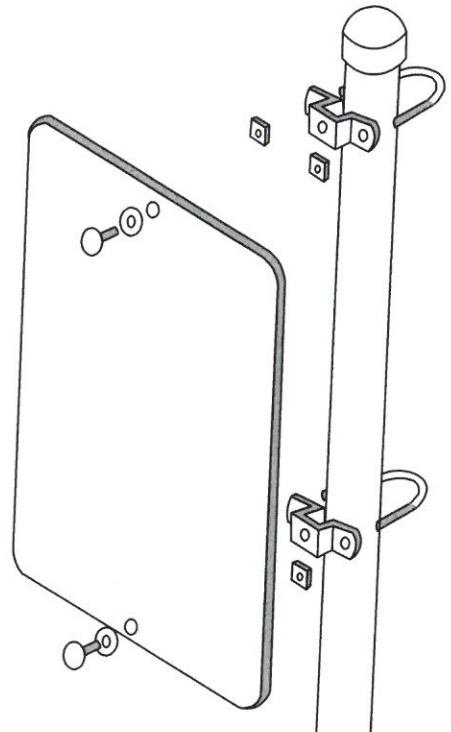




**SIGN SADDLE  
DETAIL**



**SINGLE CLAMP ON  
U-BRACKET DETAIL**



**NOTES:**

FOR SIGN SADDLE USE HAWKINS TRAFFIC M2G-312-SSTP, OR APPROVED EQUAL.  
FOR SINGLE CLAMP ON U-BRACKETS USE HAWKINS TRAFFIC M2G-C2B, OR APPROVED EQUAL.

REVISION	BY	DATE	APP. BY COUNCIL

**CITY OF CHICO**

**STANDARD PLAN**

DRAWN BY: MJD      DATE: 02/2016  
 CHECKED BY: BO      SCALE: NONE  
 APPROVED: *Byrd Otter*  
 PUBLIC WORKS DIRECTOR-ENGINEERING

**STREET SIGN MOUNTING  
DETAILS**

NO.  
**S-16**

SHEET 3 OF 3