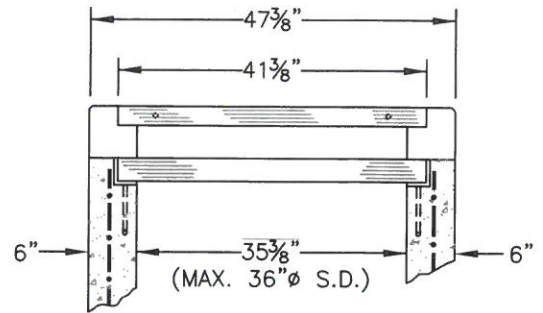
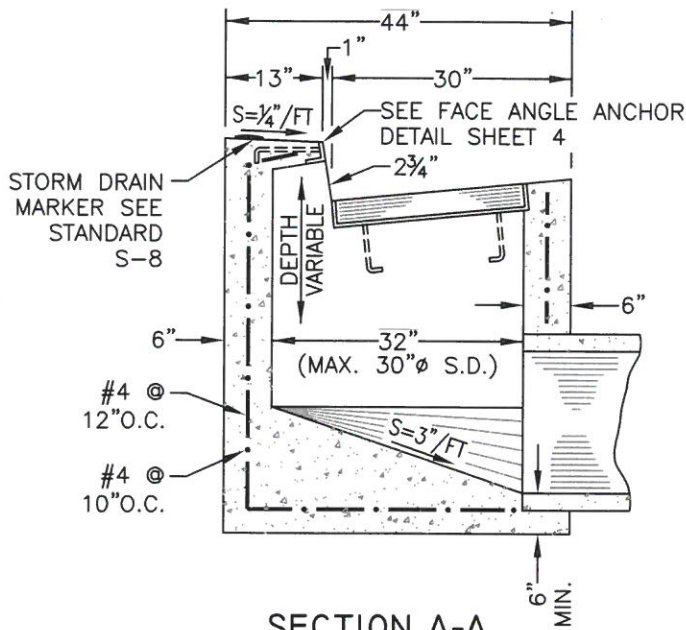


**PLAN**



**SECTION B-B**



**SECTION A-A**

**NOTES:**

1. WALL THICKNESS SHALL BE 8" WHEN DEPTH OF D.I. IS GREATER THAN 8'.
2. PIPES CAN BE PLACED IN ANY WALL.
3. SEE SHEET 2 OF 4 FOR D.I. CUT AWAY VIEW.
4. SEE SHEETS 3 & 4 FOR GRATE & FRAME DETAILS.
5. CAST-IN-PLACE OR PRECAST ALTERNATIVE IS OPTIONAL WITH CONTRACTOR; SEE STANDARD SPECS.
6. AT CONTRACTOR'S OPTION, 60" TRANSITIONS & D.I. TOP MAY BE MONOLITHIC POUR.
7. MARKERS MAY BE CAST-IN-PLACE BY MANUFACTURER OF INLET TOP.

REVISION	BY	DATE	APP. BY
	MJD	08/15	

**CITY OF CHICO**

**STANDARD PLAN**

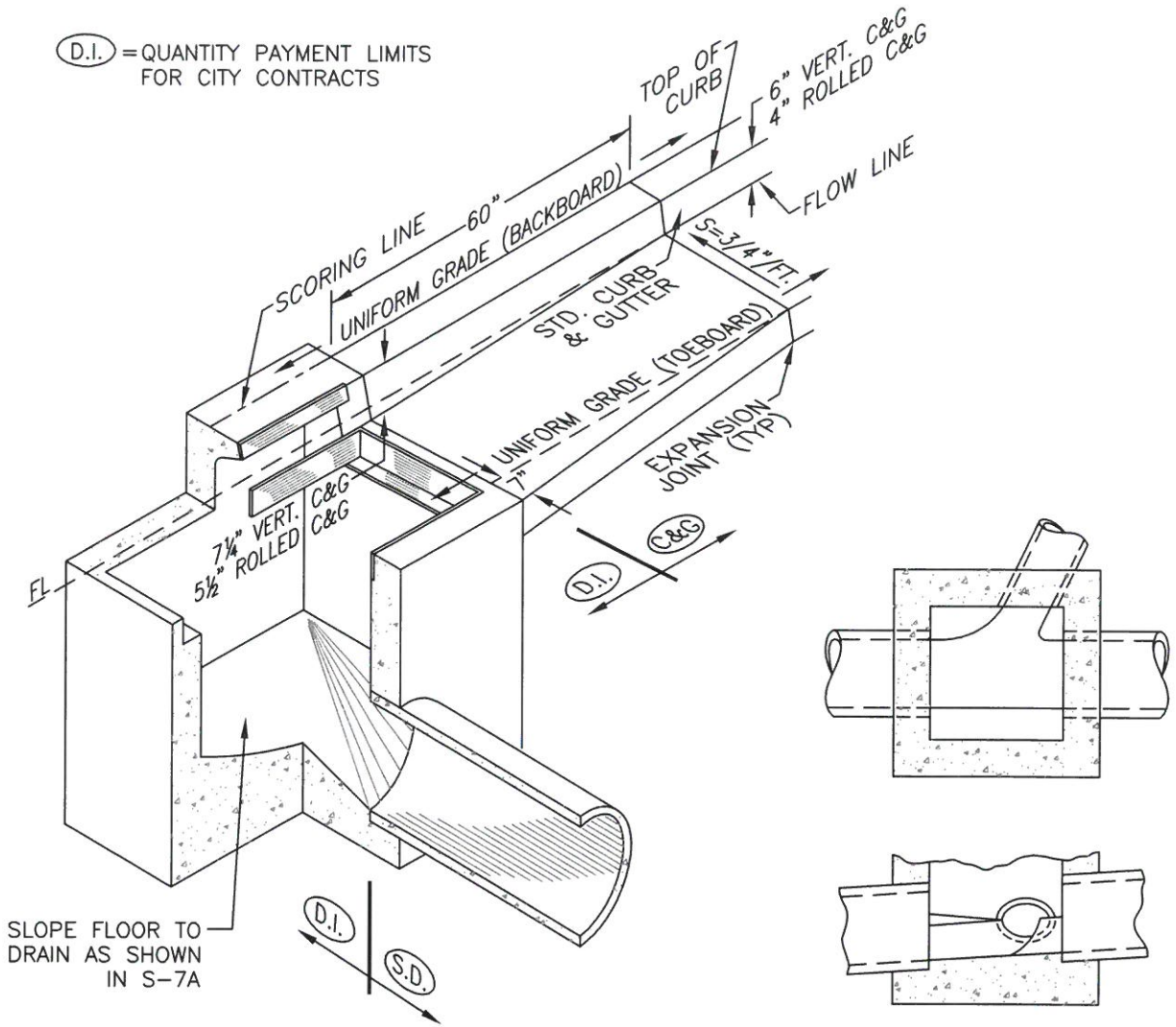
DRAWN BY: GL DATE: 02/2016  
 CHECKED BY: BO SCALE: NONE  
 APPROVED: [Signature]  
 PUBLIC WORKS DIRECTOR-ENGINEERING

**36" DROP INLET  
(CAL - TRANS "G-0")**

NO.  
**S-7**

SHEET 1 OF 4

(D.I.) = QUANTITY PAYMENT LIMITS FOR CITY CONTRACTS



**D.I. CUT AWAY VIEW**

**SHAPING OF INVERT**

NOTE: USE WHEN MORE THAN ONE PIPE CONNECTS TO THE D.I.

**NOTES:**

1. WALL THICKNESS SHALL BE 8" WHEN DEPTH OF D.I. IS GREATER THAN 8'.
2. PIPES CAN BE PLACED IN ANY WALL.
3. SEE SHEET 2 OF 4 FOR D.I. CUT AWAY VIEW.
4. SEE SHEETS 3 & 4 FOR GRATE & FRAME DETAILS.
5. CAST-IN-PLACE OR PRECAST ALTERNATIVE IS OPTIONAL WITH CONTRACTOR; SEE STANDARD SPECS.
6. AT CONTRACTOR'S OPTION, 60" TRANSITIONS & D.I. TOP MAY BE MONOLITHIC POUR.

REVISION	BY	DATE	APP. BY COUNCIL

**CITY OF CHICO**

**STANDARD PLAN**

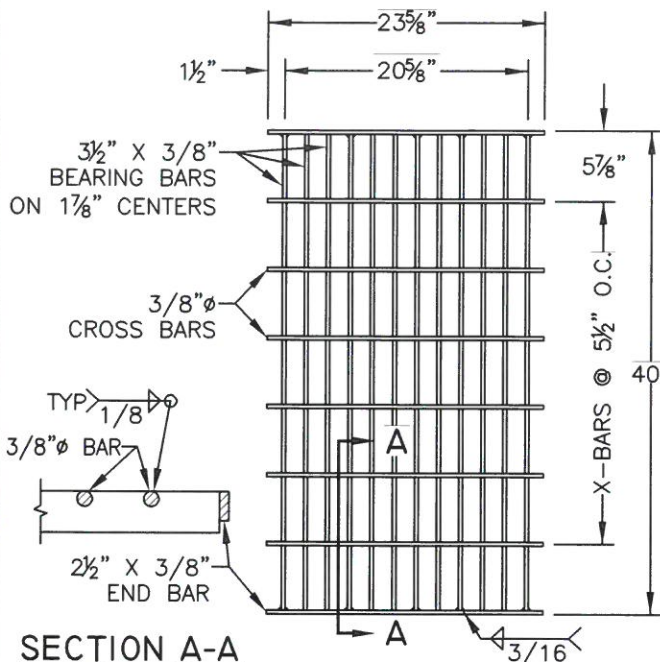
DRAWN BY: GL DATE: 02/2016  
 CHECKED BY: BO SCALE: NONE  
 APPROVED: [Signature]  
 PUBLIC WORKS DIRECTOR-ENGINEERING

**36" DROP INLET  
(CAL - TRANS "G-0")**

NO.  
**S-7**

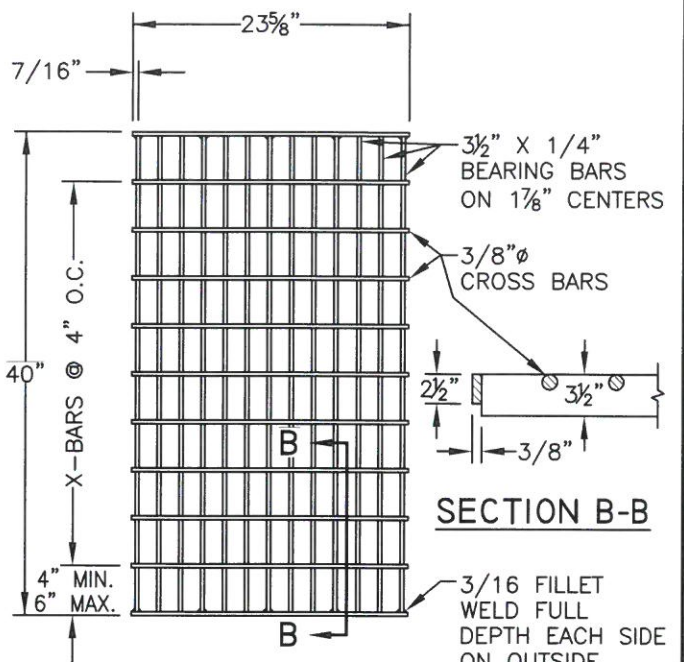
SHEET 2 OF 4





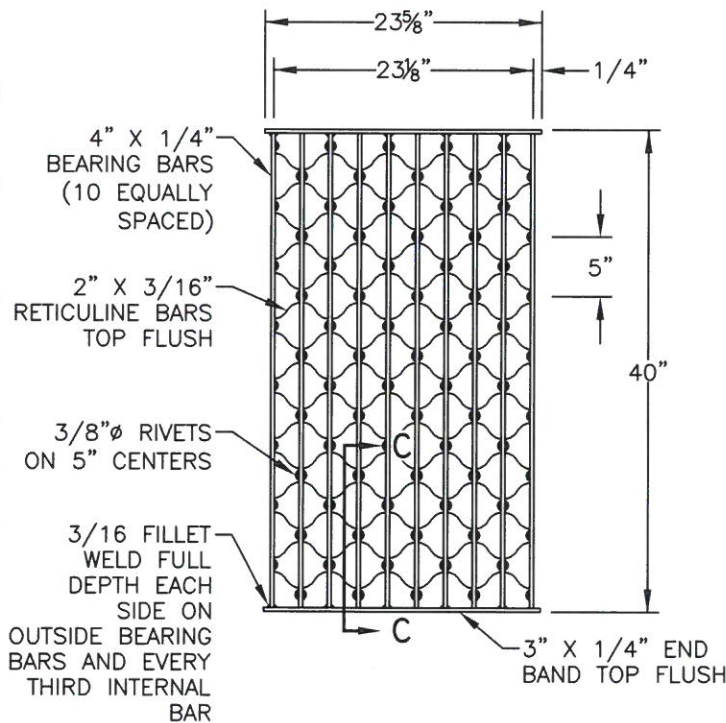
**SECTION A-A**

**24-12X GRATE**  
(WELDED STEEL)

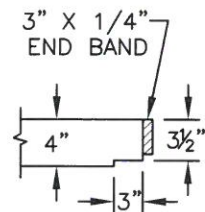


**SECTION B-B**

**24-13 GRATE**  
(WELDED STEEL)



**24-10S GRATE**  
(WELDED STEEL)  
RETICULINE TYPE



**SECTION C-C**

**NOTES:**

1. GRATE TYPE NUMBERS REFER TO WIDTH OF GRATE IN INCHES AND NUMBER OF BARS, RESPECTIVELY.
2. CROSS BARS MAY BE FILLET WELDED, RESISTANCE WELDED OR ELECTROFORGED TO BEARING BARS.
3. ROUNDED TOP OF BARS OPTIONAL ON ALL GRATES.
4. ALL GRATES SHALL BE GALVANIZED IN ACCORDANCE WITH SECTION 75-1.05 OF THE STANDARD SPECIFICATIONS.

REVISION	BY	DATE	APP. BY COUNCIL

**CITY OF CHICO**

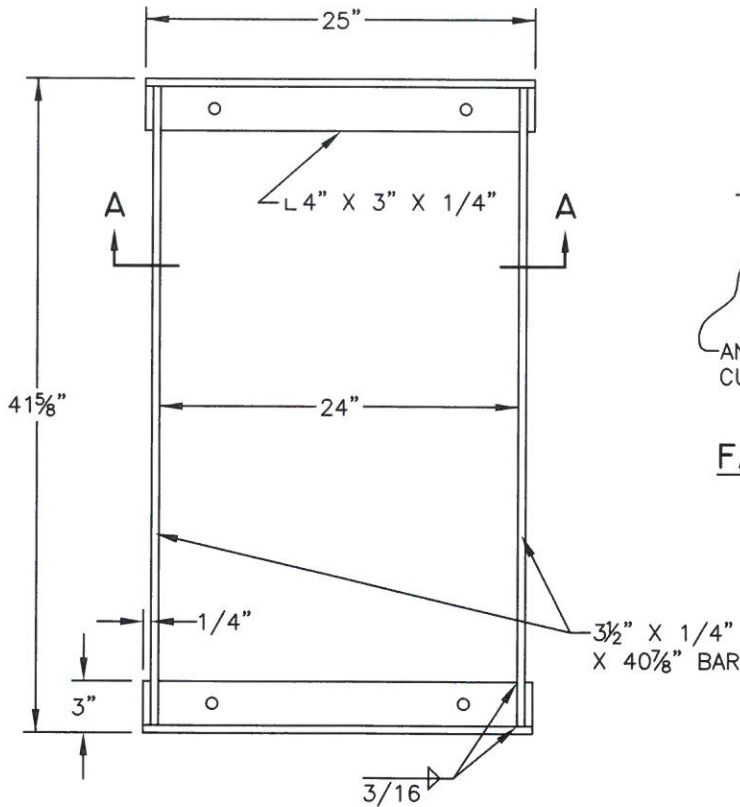
**STANDARD PLAN**

DRAWN BY: GL DATE: 02/2016  
 CHECKED BY: BO SCALE: NONE  
 APPROVED: [Signature]  
 PUBLIC WORKS DIRECTOR-ENGINEERING

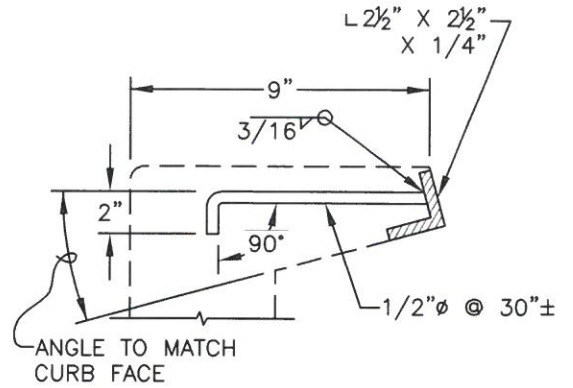
**GRATE DETAILS (CAL TRANS  
STANDARD D-77-A & D-77-B)**

NO.  
**S-7**

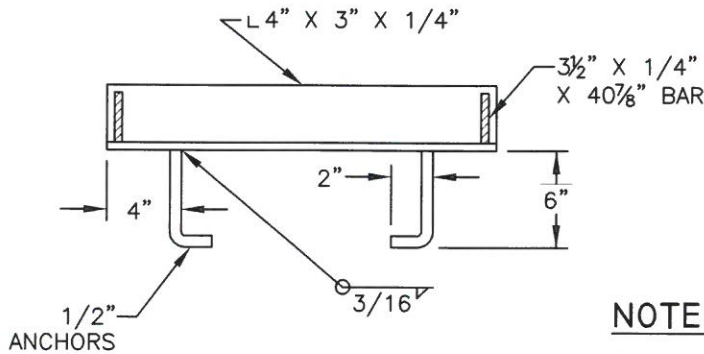
SHEET 3 OF 4



**GRATE FRAME**



**FACE ANGLE ANCHOR DETAIL**



**SECTION A-A**

**NOTES:**

1. FULL PENETRATION BUTT WELDS MAY BE SUBSTITUTED FOR FILLET WELDS ON ANCHORS.
2. ALL FRAMES SHALL BE GALVANIZED IN ACCORDANCE WITH SECTION 75-1.05 OF THE STANDARD SPECIFICATIONS.

REVISION	BY	DATE	APP. BY COUNCIL

**CITY OF CHICO**

**STANDARD PLAN**

DRAWN BY: GL DATE: 02/2016  
 CHECKED BY: BO SCALE: NONE  
 APPROVED: Bruce Otter  
 PUBLIC WORKS DIRECTOR-ENGINEERING

**GRATE FRAME & FACE ANGLE ANCHOR DETAILS (CAL TRANS STANDARD D-77-A & D-77-B)**

NO. **S-7**

SHEET 4 OF 4