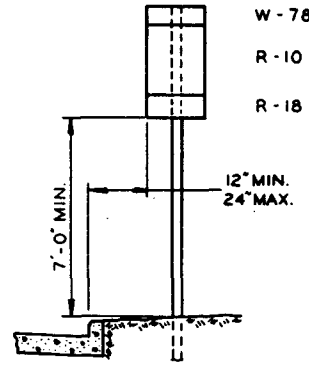
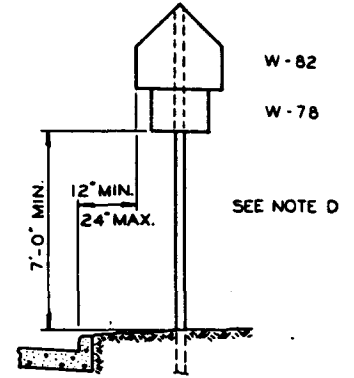


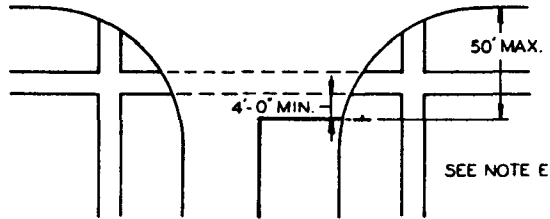
SPEED LIMIT



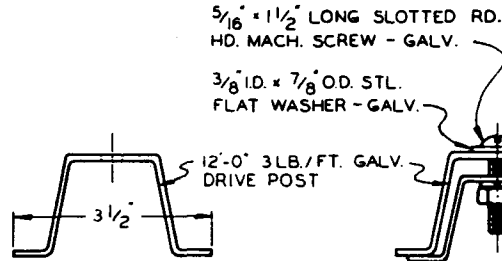
SCHOOL ZONE LIMIT



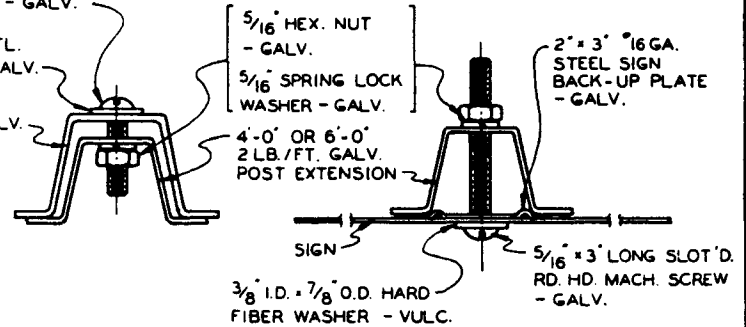
SCHOOL ZONE ADVANCE SIGN



TYPICAL PLACEMENT OF STOP SIGN



SECTION A-A



SECTION B-B
SEE NOTE C

SECTION C-C

NOTES

- (A) IN LOCATIONS WHERE PAVEMENT IS UNCURBED AND "NO PARKING" SPACE OR LANE IS AVAILABLE, SIGN MAY BE 5'-0" ABOVE PAVEMENT (SEE STATE MANUAL).
- (B) WHEN POST IS SET IN 12" Ø CONCRETE CAST-IN-PLACE IMBEDMENT, THE DEPTH MAY BE REDUCED TO 4'-0".
- (C) ATTACH POST EXTENSION WITH MINIMUM OF 3 FASTENER ASSEMBLIES.
- (D) FOR SCHOOL CROSSWALK SIGN, USE W-81 AND WP-81.
- (E) FOR SCHOOL CROSSWALK ADVANCE SIGN, USE W-82 AND WP-82.
- (E) SIGN LOCATION SHALL BE ADJUSTED AS REQUIRED BY EXISTING CONDITIONS SUCH AS LOCATION OF UTILITY POLES OR TREES (SEE STATE MANUAL SEC. 2E-2 AND 2H-5).

A CHECK FOR OBSTRUCTIONS TO VIEWING OF SIGNS, SUCH AS TREE LIMBS, AND ARRANGEMENTS FOR NECESSARY REMOVAL OF OBSTRUCTIONS SHALL BE MADE PRIOR TO THE INSTALLATION OF NEW SIGNS.

A CHECK WITH THE UTILITY COMPANIES FOR UNDERGROUND OBSTRUCTIONS SUCH AS BURIED ELECTRICAL CABLES, TELEPHONE CONDUITS, OR GAS MAINS MUST BE MADE PRIOR TO INSTALLATION OF ANY SIGN DRIVE POST.



CITY OF ELYRIA, OHIO DEPARTMENT OF ENGINEERING	
TYPICAL SIGN INSTALLATION DETAILS	
DR. BY <u>L.G. SHIPPY</u>	DATE <u>2-21-76</u>
CK. BY _____	DATE _____
<i>Lonny G. Shippy</i> APPROVED CITY ENGINEER	
1-900	