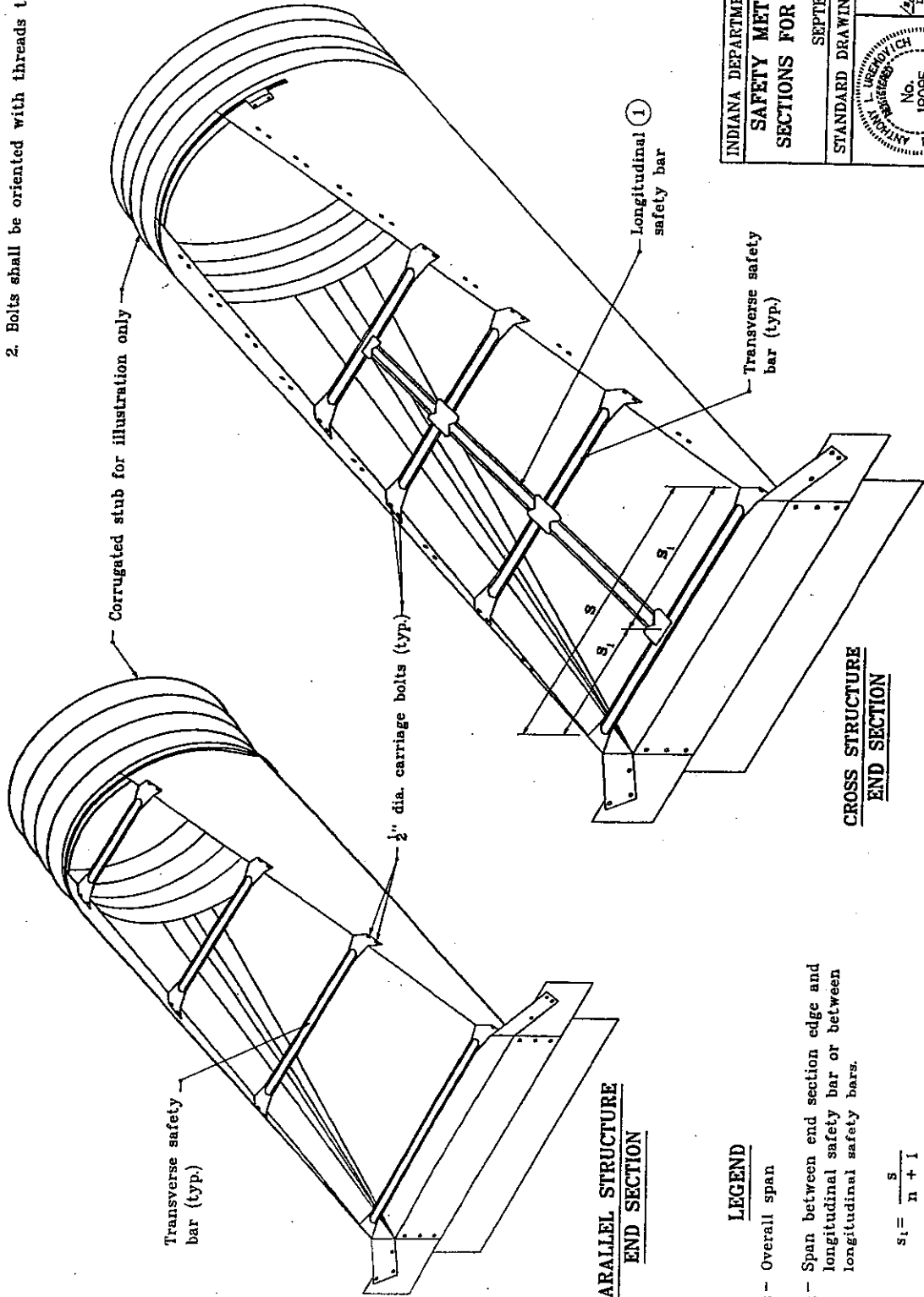


**GENERAL NOTES**

- 1 Longitudinal safety bar shall be welded to transverse bars. For cross structure and section, if S ( 2'-6, no longitudinal safety bar is required. If S ) 2'-6, longitudinal safety bar(s) shall be provided so S<sub>1</sub> ( 2'-6.
- 2 Bolts shall be oriented with threads to inside of end section.



**LEGEND**

- s - Overall span
  - s<sub>1</sub> - Span between end section edge and longitudinal safety bar or between longitudinal safety bars.
- $$s_1 = \frac{s}{n + 1}$$
- where n = Number of longitudinal safety bars

|  |                                    |
|--|------------------------------------|
| INDIANA DEPARTMENT OF TRANSPORTATION                               |                                    |
| SAFETY METAL CULVERT END SECTIONS FOR CORRUGATED PIPE              |                                    |
| SEPTEMBER 2000   | STANDARD DRAWING NO. E 715-SMES-01 |
|  |                                    |
| /s/ Anthony L. Urosovich 9-01-00<br>DESIGN STANDARDS ENGINEER DATE |                                    |
| /s/ Bruce Zaricki 9-01-00<br>CHIEF DESIGN ENGINEER DATE            |                                    |