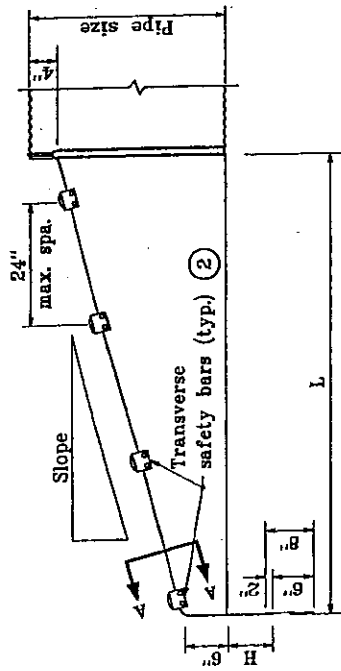
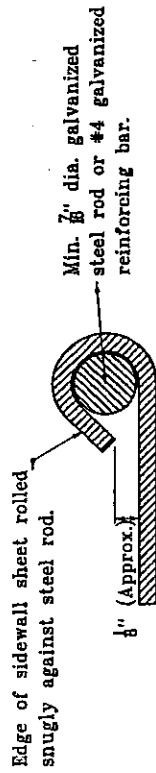


**GENERAL NOTES**

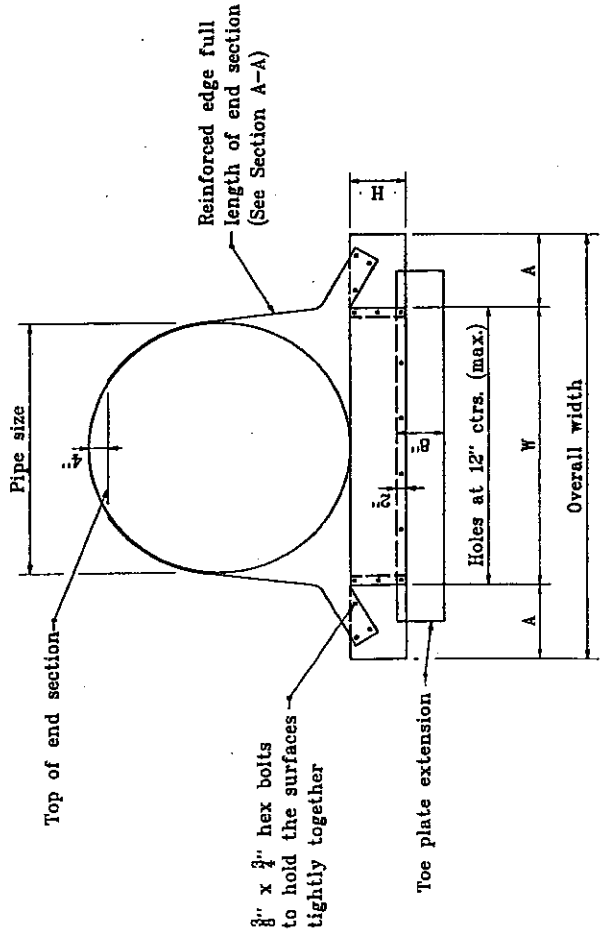
1. See Standard Drawing E 715-SMES-06 for variable dimensions.
- ② Transverse safety bars shall be schedule 40 galvanized steel pipe. Pipe shall be galvanized after forming. Number of bars required will vary depending on the length of the end sections.
3. The toe plate extension shall be the same thickness as the end section. The dimension shall be the end section overall width less 8".



**SIDE ELEVATION OF PARALLEL STRUCTURE END SECTION**



**SECTION A-A**



INDIANA DEPARTMENT OF TRANSPORTATION  
**SAFETY METAL CULVERT END SECTIONS FOR CORRUGATED PIPE**  
 JANUARY 1998  
 STANDARD DRAWING NO. E 715-SMES-04

DETAILS PLACED IN THIS FORMAT 7-27-95

*/s/ Anthony L. Uremowich* 7-27-99  
 DESIGN STANDARDS ENGINEER DATE

*/s/ Floyd Zentgraf* 7-27-99  
 CHIEF HIGHWAY ENGINEER DATE

ORIGINALLY APPROVED 1-02-90

INDIANA PROFESSIONAL ENGINEERS BOARD  
 No. 18095  
 STATE OF INDIANA  
 PROFESSIONAL ENGINEER