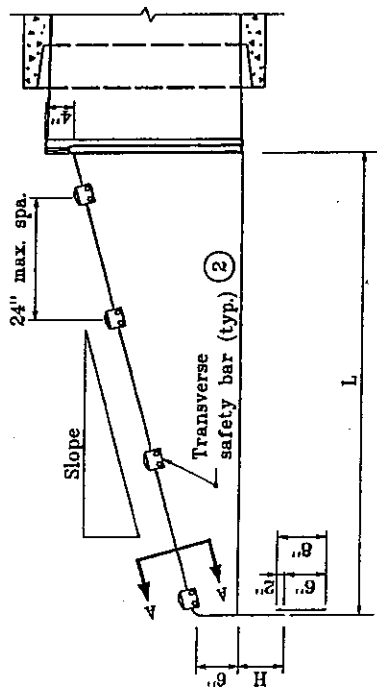
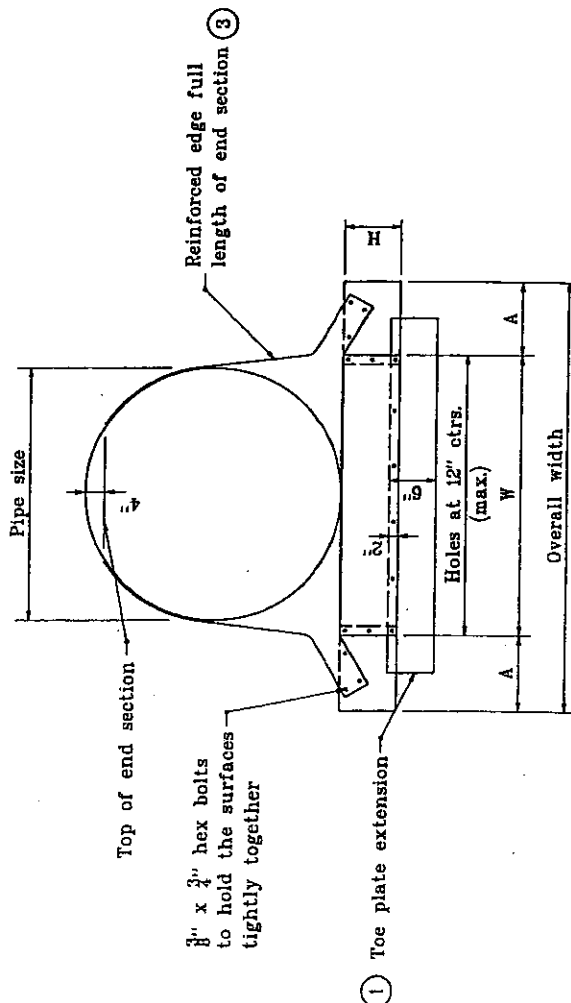


GENERAL NOTES

- ① Toe plate extension is to be the same thickness as the end section. Dimension shall be end section overall width less 6".
- ② Transverse safety bars shall be Schedule 40 galvanized steel pipe. Pipe to be galvanized after forming. Number of bars req'd will vary depending on the length of the end section.
- ③ See Standard Drawing E 715-SMES-11 for Section A-A.
- 4. See Standard Drawing E 715-SMES-12 for variable dimensions.



SIDE ELEVATION OF PARALLEL STRUCTURE END SECTION



FRONT VIEW

INDIANA DEPARTMENT OF TRANSPORTATION
SAFETY METAL CULVERT END SECTIONS FOR SMOOTH PIPE
 JANUARY 1998
 STANDARD DRAWING NO. E 715-SMES-10
 DETAILS PLACED IN THIS FORMAT 7-27-98
 L. URENOVIC
 No. 18095
 STATE OF INDIANA
 PROFESSIONAL ENGINEER
 /s/ Anthony J. Dymowski 7-27-99
 DESIGN STANDARD ENGINEER DATE
 /s/ Frank Zandi 7-27-99
 CHIEF HIGHWAY ENGINEER DATE
 CREANALLY APPROVED
 DESIGN STANDARD ENGINEER 1-02-98