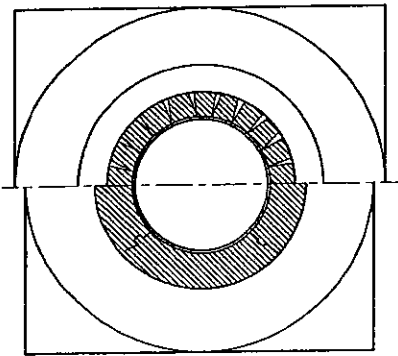
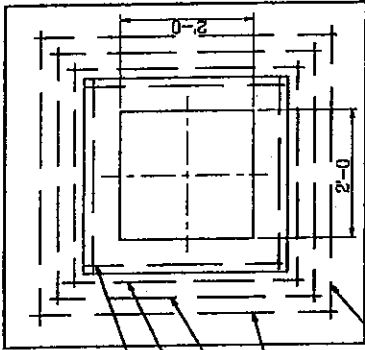


GENERAL NOTES

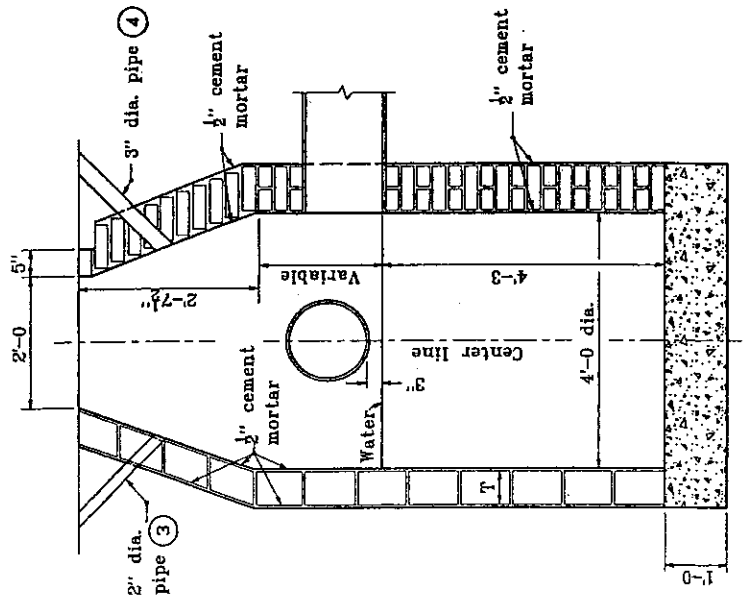
1. Brick, block, or concrete may be used.
2. Precast catch basin type W may be substituted for catch basin type A.
3. 2" dia. pipe drain from bottom of curb to inlet. Aggregate to be placed around inlet end of pipe.
4. 3" dia. pipe to be kept open for drainage of subgrade or base until surface is placed.
5. Reinforcement required if Dim. A < 2'-6". Reinforcement not required if Dim. A \geq 2'-6".



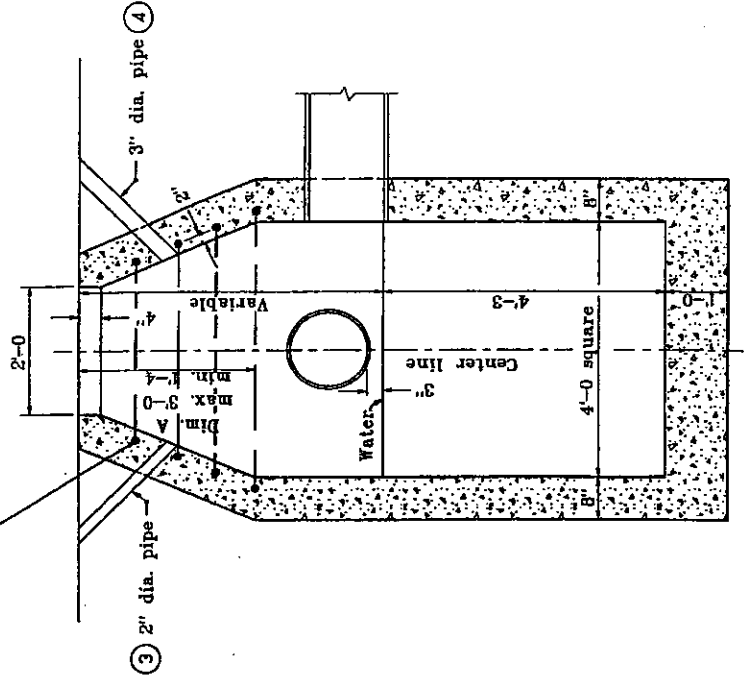
- #5 x 3'-0"
- #5 x 3'-6"
- #5 x 4'-0"
- #5 x 4'-6"



#5 ea. layer



BRICK OR BLOCK



CONCRETE

INDIANA DEPARTMENT OF TRANSPORTATION
CATCH BASIN
TYPE A
 SEPTEMBER 1997
 STANDARD DRAWING NO. E 720-CBST-01
 DETAILS PLACED IN THE FORMAT 11-15-99
 No. 18095
 INDIANAPOLIS, INDIANA
 PROFESSIONAL ENGINEER
 DATE
 /s/ Anthony L. Dremowitch, 11-15-99
 DESIGN STANDARD ENGINEER
 DATE
 /s/ Frank Zenda, 11-15-99
 CHIEF HIGHWAY ENGINEER
 DATE
 ORIGINALLY APPROVED
 9-22-97