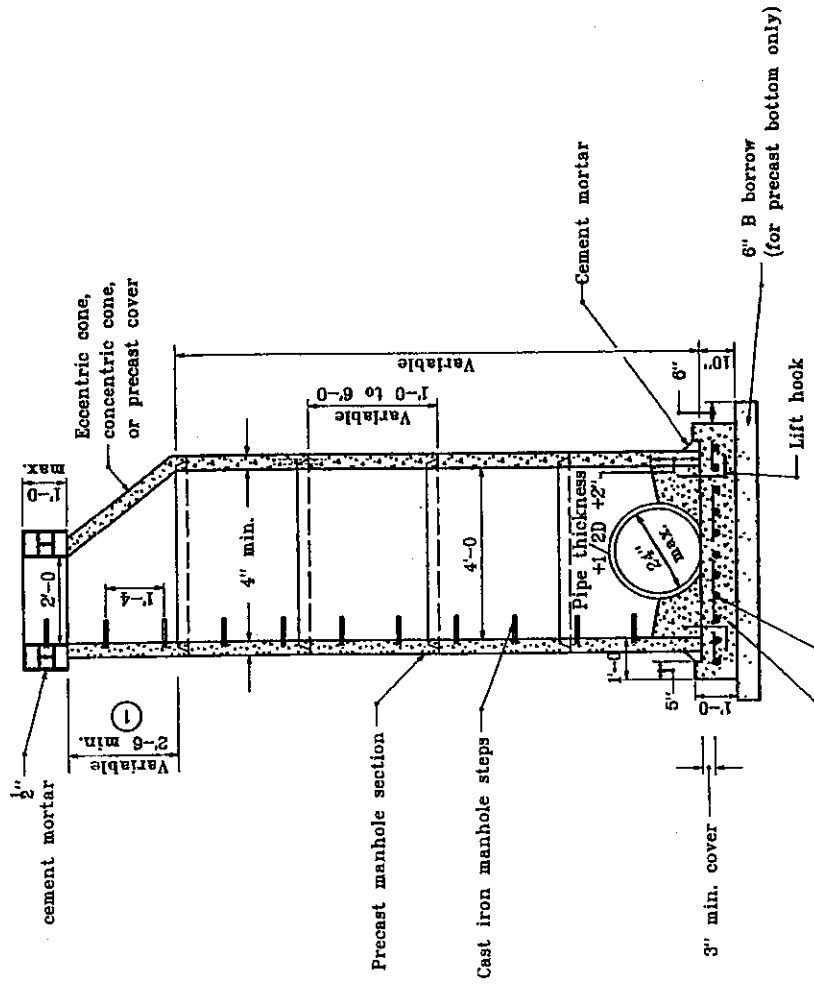
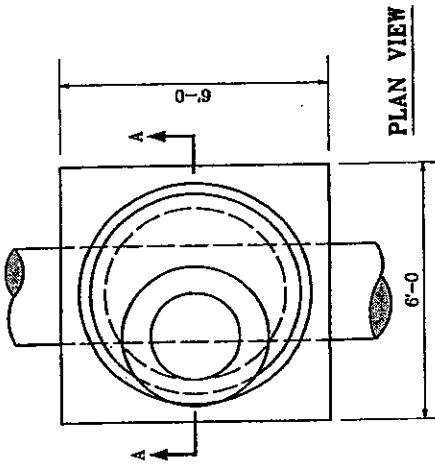


**GENERAL NOTES**

- ① For eccentric and concentric cone heights see cone heights table on Standard Drawing E 720-MHST-08.



INDIANA DEPARTMENT OF TRANSPORTATION	
<b>MANHOLE TYPE C</b>	
SEPTEMBER 1997	
STANDARD DRAWING NO. E 720-MHST-02	
DETAILS PLACED IN THE FORMAT 11-15-99	
1/5 / Anthony L. Uredoych 11-15-99 DESIGN STANDARDS ENGINEER DATE	
1/9 / F. P. Zandi 11-15-98 CHIEF INCHARGE ENGINEER DATE	
DIVISION STANDARDS ENGINEER ORIGINALLY APPROVED 9-22-97	

#4 @ 6" c. to c. both ways