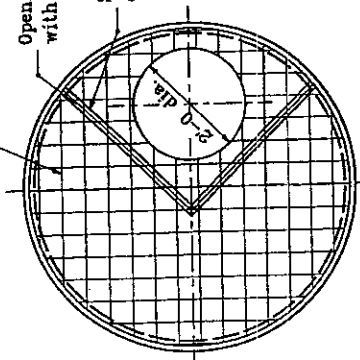


Min. steel area  $0.12 \text{ in}^2 / \text{ft}$  of width in both directions.

Opening additionally reinforced with equivalent of  $0.20 \text{ in}^2 / \text{ft} \times 90^\circ$

Straight rods, min length = dia. of opening plus 2".



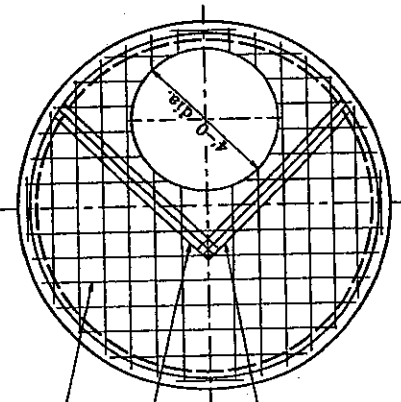
**DETAIL A**

**COVER CAP FOR PRECAST CONCRETE MANHOLE SECTION**

Min. steel area  $0.12 \text{ in}^2 / \text{ft}$  of width in both directions.

Opening additionally reinforced with equivalent of  $0.20 \text{ in}^2 / \text{ft} \times 90^\circ$

Straight rods, min length = dia. of opening plus 2".

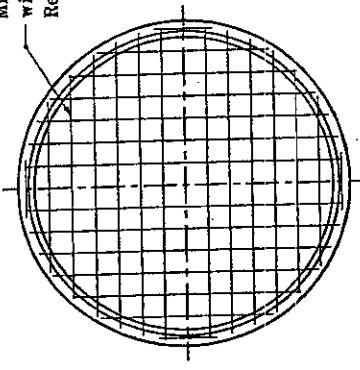


**DETAIL B**

**REDUCER CAP FOR PRECAST MANHOLE SECTION (5'-0 to 9'-0 DIA.)**



Min. steel area  $0.12 \text{ in}^2 / \text{ft}$  of width in both directions.  
Rebar or wire mesh equivalent.



**DETAIL C**

**BASE FOR PRECAST CONCRETE MANHOLE SECTIONS (5'-0 to 9'-0 DIA.)**

Section Dia.	H
5'-0	6'-0
6'-0	7'-2
8'-0	9'-6
8'-6	10'-0
9'-0	10'-8

Section Dia.	D
5'-0	6'-0
6'-0	7'-2
8'-0	9'-6
8'-6	10'-0
9'-0	10'-8

INDIANA DEPARTMENT OF TRANSPORTATION  
**PRECAST CONCRETE MANHOLE SECTIONS**  
 APRIL 1995

STANDARD DRAWING NO. E 720-MHST-06  
 DETAILS PLACED IN THIS FORM 11-15-93

L. URBANOWSKI  
 No. 18095  
 STATE OF INDIANA  
 PROFESSIONAL ENGINEER

1/ Anthony L. Urbanowicz 11-15-93  
 DESIGN STANDARD ENGINEER DATE

3/ Forodes Zantet 11-15-93  
 CIVIL HIGHWAY ENGINEER DATE

ORIGINALLY APPROVED 4-00-95