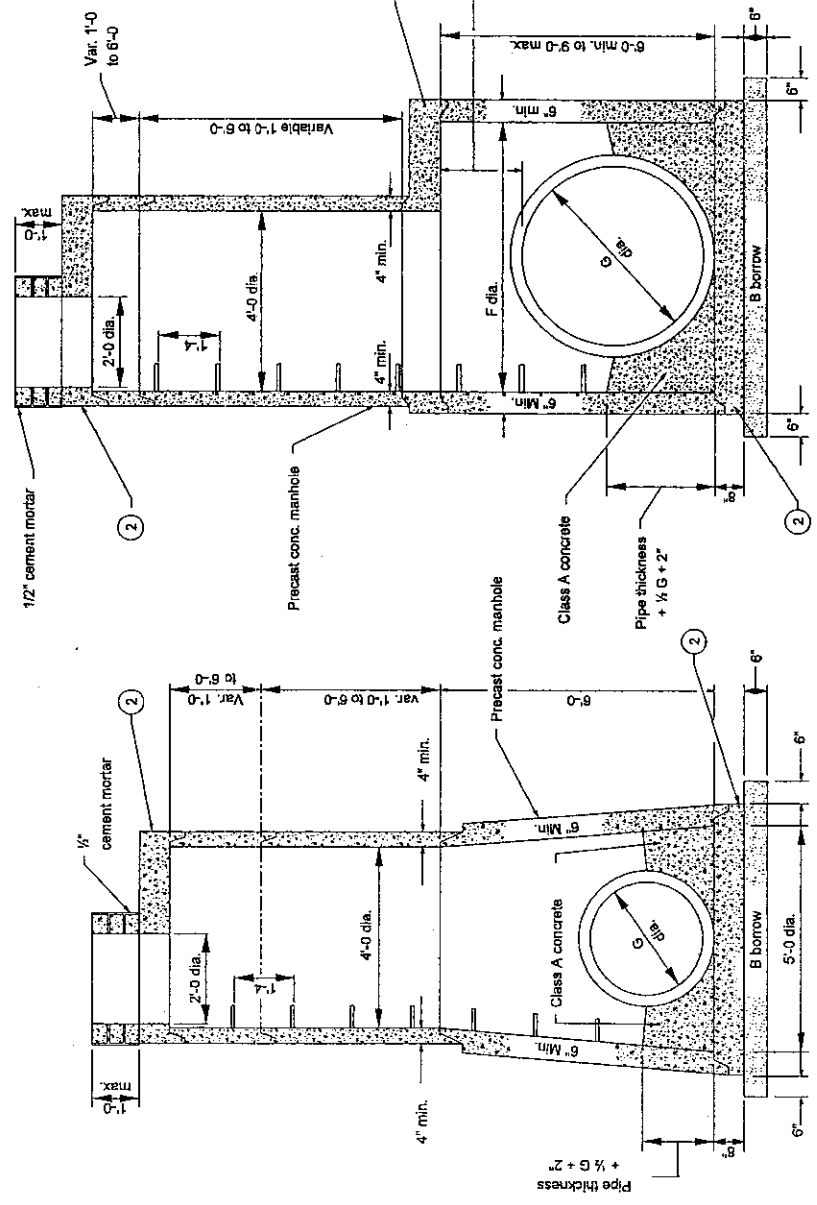


MANHOLE PIPE SIZES

Type	G (in.)	F (ft. in.)	Maximum Pipe Size Rt. Δ to Mainline (in.)	Maximum Pipe Size for Mainline (in.)
H	24 to 36	—	30	36
J	24 to 36	5'-0	30	36
K	36 to 48	6'-0	36	48
L	48 to 54	8'-0	48	54
M	54 to 72	8'-6	66	72
N	72 to 84	9'-0	72	84

NOTES

- Drop pipe may be used with manholes Type H, J, K, L, M, or N. Such manhole shall be referred to as drop manholes type H, J, K, L, M, or N. For details of construction see Standard Drawing E 720-MHST-03.
- See Standard Drawing E 720-MHST-06 for Details A, B, and C.
- Manholes type C, D, E, or F, may be substituted for manholes type H, J, K, L, M, or N, for comparable pipe sizes. See Standard Drawings E 720-MHST-02 and -04 for manholes type D, E, F, and G details..



INDIANA DEPARTMENT OF TRANSPORTATION
MANHOLES
TYPE H, J, K, L, M, AND N
 SEPTEMBER 2006
 STANDARD DRAWING NO. E 720-MHST-05

Richard L. Vandervoort
 DESIGN STANDARDS ENGINEER
 DATE 9-0-06

Richard K. Smutzer
 CHIEF HIGHWAY ENGINEER
 DATE 9-0-06

INDIANA ENGINEERING BOARD
 NO. 9750
 STATE OF INDIANA
 REGISTERED PROFESSIONAL ENGINEER
 CE-38391 STANDARDS ENGINEER