

ARTICLE VI: APPENDICES

Section

- Appendix A Sign types
- Appendix B Area computational methodology
- Appendix C Scenic corridors

APPENDIX A: SIGN TYPES

Figure 1. Message Center

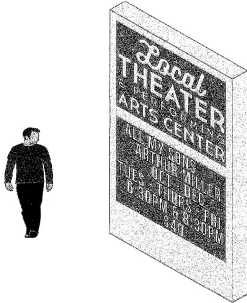


Figure 2. Awning Sign

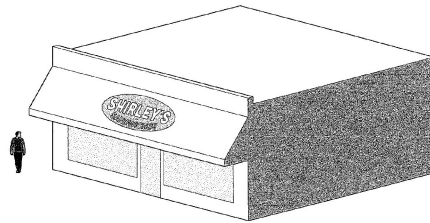


Figure 3. Banner Sign (freestanding & attached)

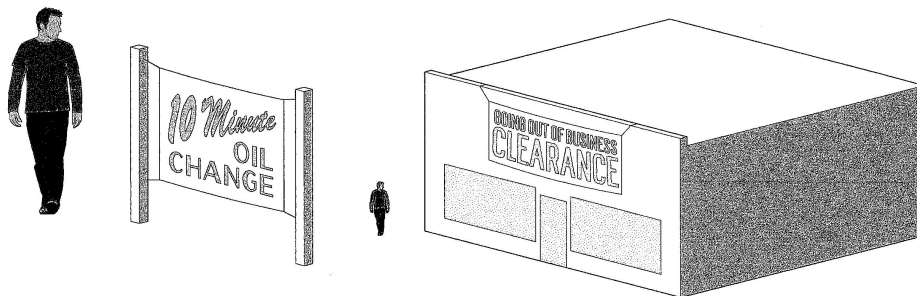


Figure 4. Bench Sign

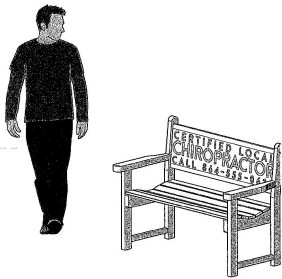


Figure 5. Billboard Sign

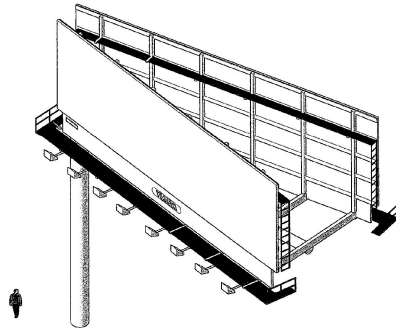


Figure 6. Canopy Sign (attached)

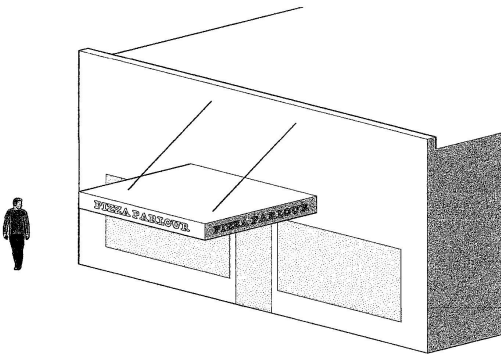


Figure 7. Canopy Sign (detached)

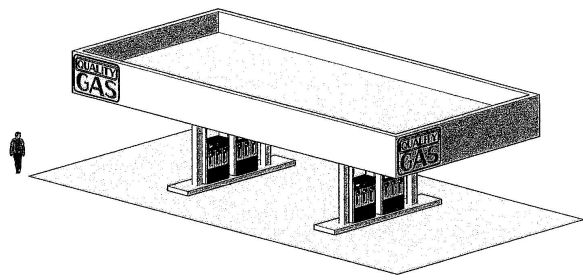


Figure 8. Decorative Post Sign



Figure 9. Decorative Post Sign (suspended)

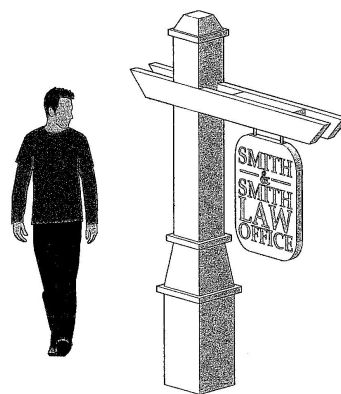


Figure 10. Directory Sign

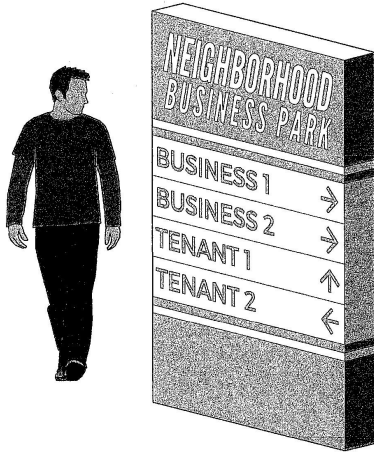


Figure 11. Flag

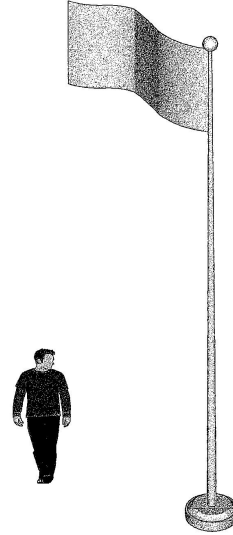
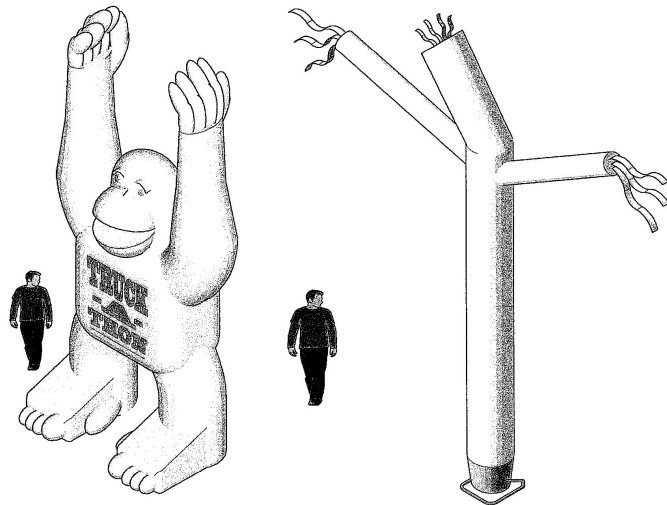


Figure 12. Windfeather Sign



Figure 13. Inflatable Sign



Greenville County - Signs

Figure 14. Marquee Sign

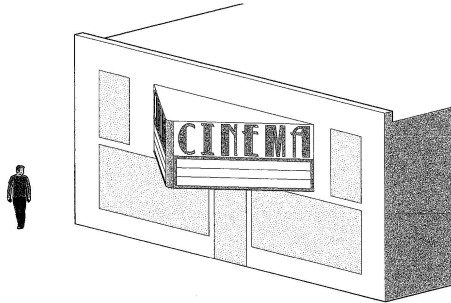


Figure 15. Mobile Sign

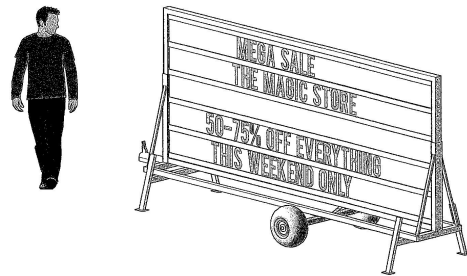


Figure 16. Monument Sign

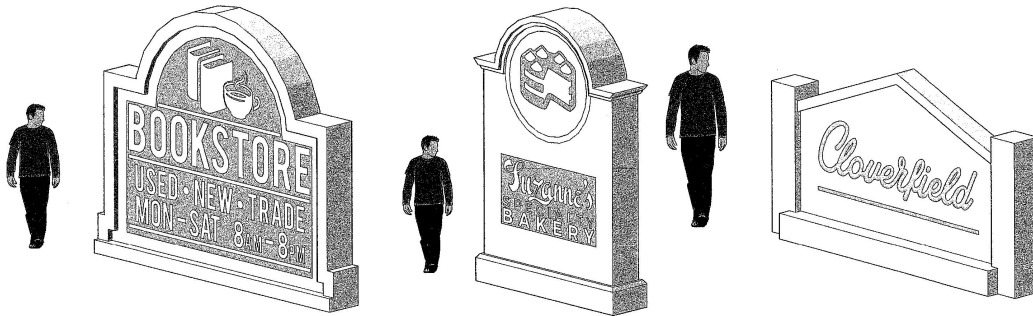


Figure 17. Moveable Sign

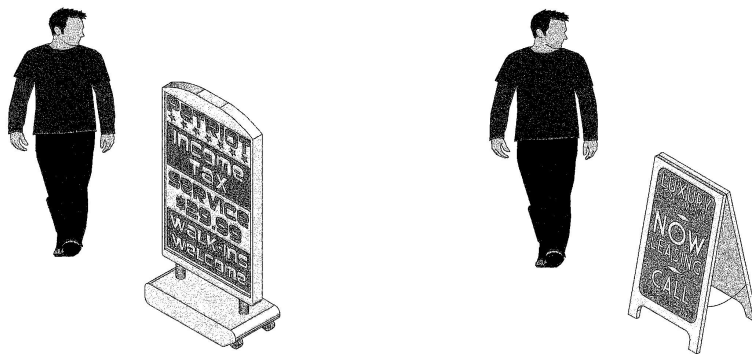


Figure 18. Multiple-faced Sign

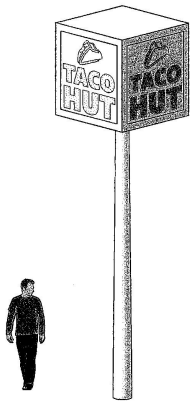


Figure 19. Pennants

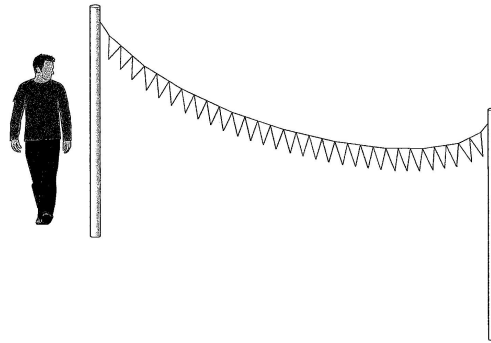


Figure 20. Streamers

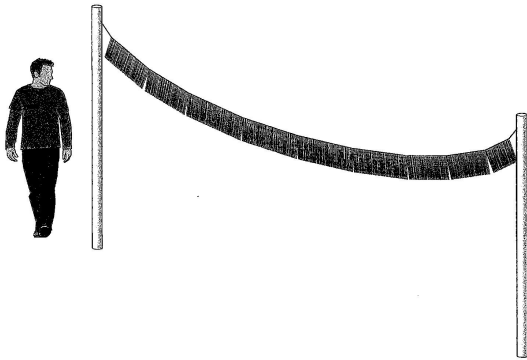


Figure 21. Pole Sign

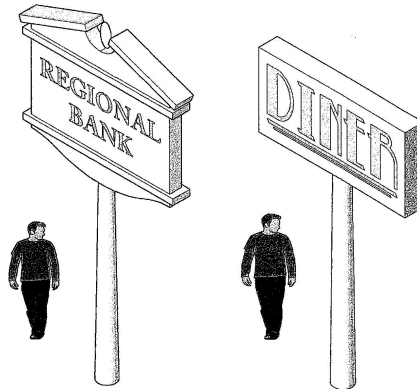
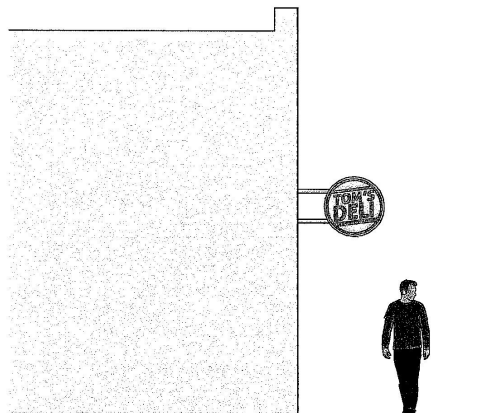


Figure 22. Projecting Sign



Greenville County - Signs

Figure 23. Pylon Sign

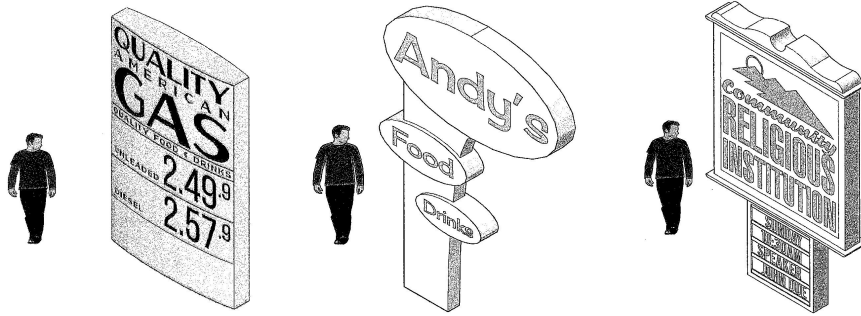


Figure 24. Roof Sign

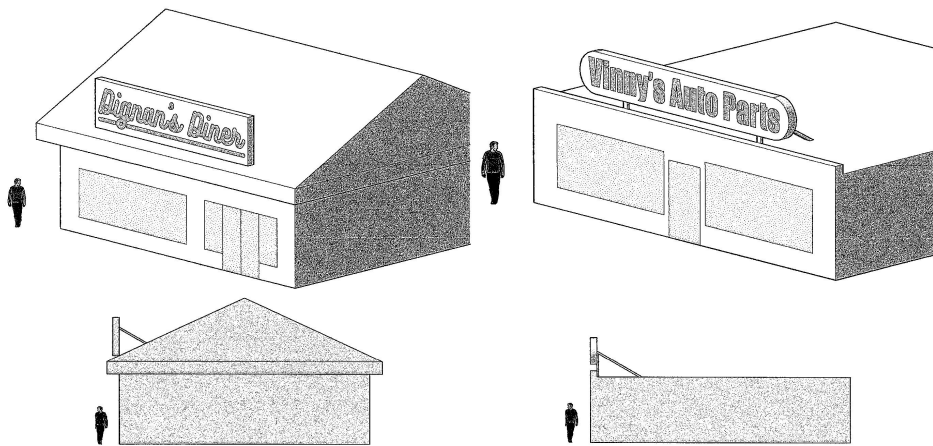


Figure 25. Under canopy/awning Sign

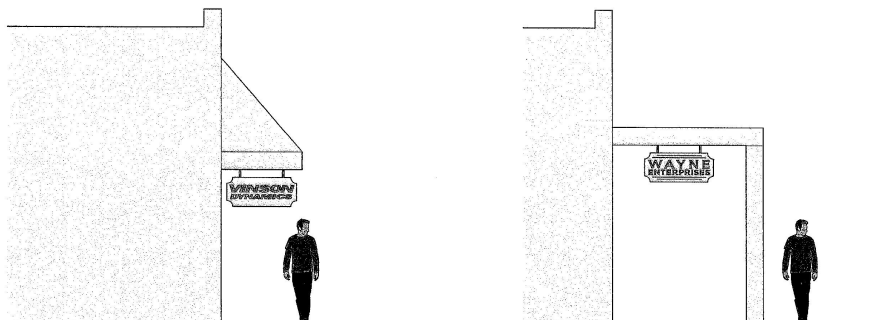


Figure 26. V-Sign

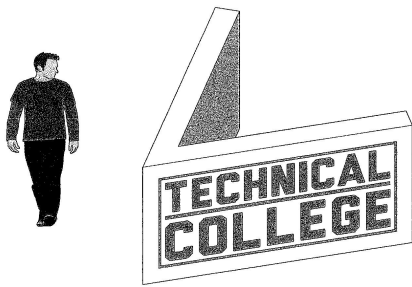


Figure 27. Wall Sign

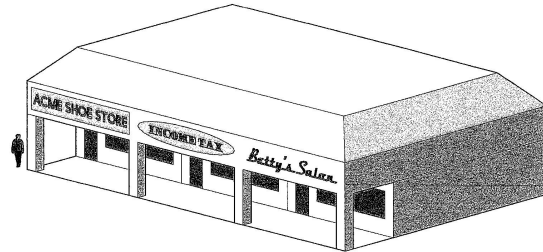


Figure 28. Window Sign

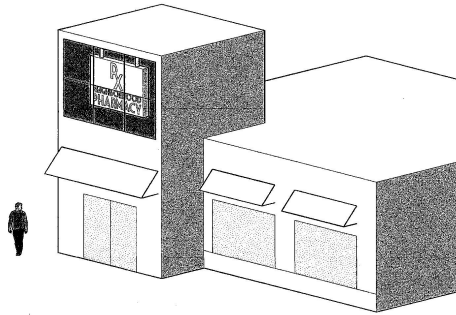
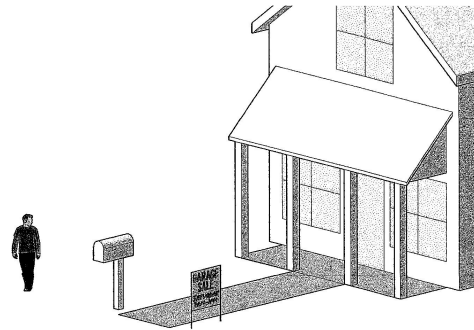


Figure 29. Yard Sign



(Ord. 4926, passed 8-15-2017)

