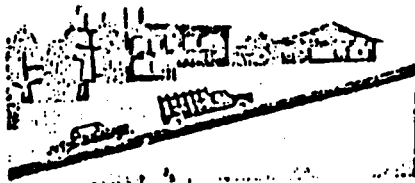
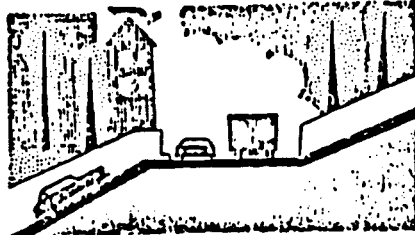


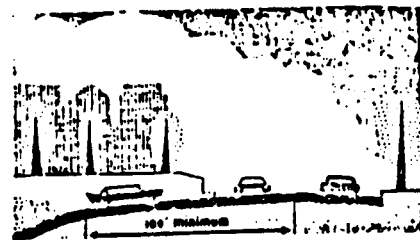
as any street
create traffic
and drainage
problems



steep grades at
intersections
reduce sight
distances and
hinder vehicle
control

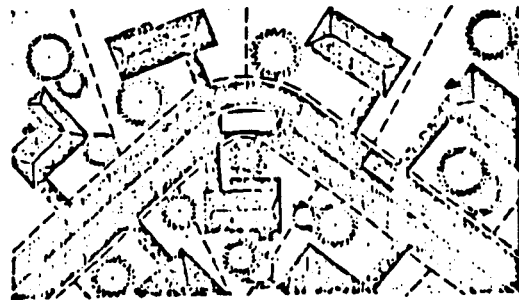


street grades
should be flattened
out within 100 feet
of intersections

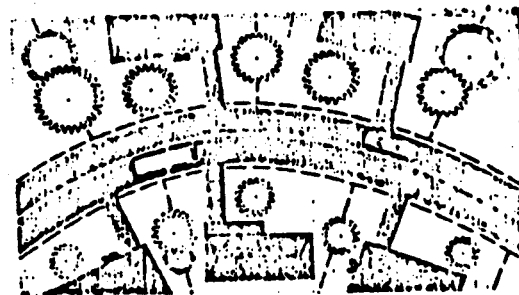


G
R
A
D
E
S

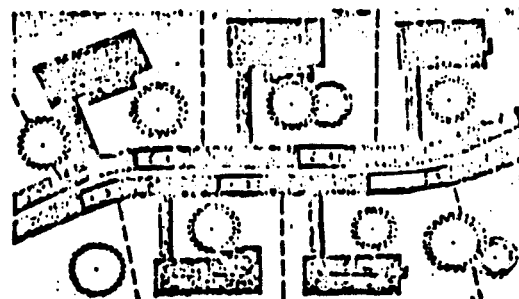
sharp curves reduce
sight distances and
difficult shaped
lots result



proper curvature
results in ample
sight distances and
good lotting



a tangent between
reverse curves
produces longer
sight distances



C
U
R
V
E
S